

Case Study: Modular Homes

Totally Modular

Totally Modular is a manufacturer of volumetric modular homes aimed at the affordable and social housing market. Their homes are precision engineered on a factory production line and start as a robust hybrid steel frame. They achieve a build status around 95% completion before they are delivered to site. Based in the West Midlands, they offer a wide range of building styles including houses with up to five beds, bungalows for families, and multi-level apartments.

Totally Modular were looking for a new innovative way to cover the wet areas of their three-bed show home bathroom, currently situated at Dudley College. With their homes being transported across the country, Totally Modular wanted to avoid using wet trades in their bathrooms and instead work with a wall covering that was far more robust than tiles. They chose to use Multipanel wall panels as our durable wall panels are grout free, easy to install and on average can be installed up to three times quicker than tiles.

“When the Multipanel solution was installed at our three-bed demonstrator home, we were very impressed,” says Sophie Chater, Sales & Marketing Executive at Totally Modular. *“Not just from an aesthetic point of view, but also logistically, this system accommodates our methodology when our homes are being transported across the country.”*



“We were thrilled to partner with Multipanel for a variety of reasons,” continues Sophie. *“Firstly, we were impressed with the quality and vast design choice of their products. We pride ourselves in offering our customers bespoke solutions, so their large range aligns with the customisation element of our offering.”*

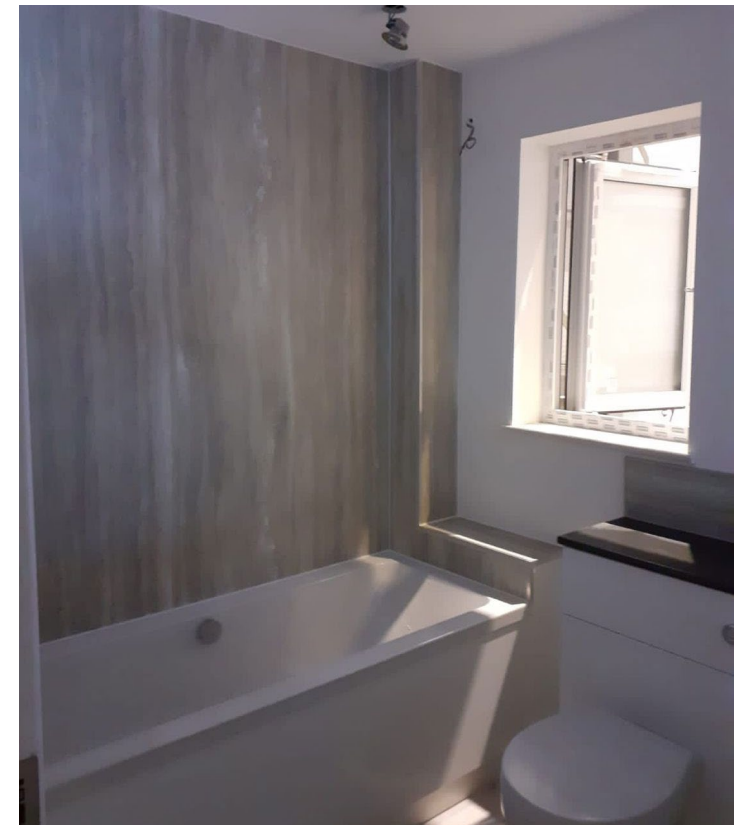
As an eco-conscious manufacturer, it was important for Totally Modular to work with a company that upholds sustainability values and for Multipanel, environmental responsibility is a core principle. Our panels are (FSC®) certified (License Code: FSC-C128180) to ensure that the timber we use originates from responsibly managed forests. These wall panels are manufactured in the UK to reduce our carbon footprint and they are also 100% recyclable.

“Furthermore, sustainability is at the heart of everything we do at Totally Modular,” says Sophie. *“It is now at the heart of all our processes from how our modular homes are designed, constructed through to the living experience that the residents benefit from. Seeing Multipanel also putting sustainability at the front of their agenda, was important to us when deciding to partner with them.”*



“Seeing Multipanel also putting sustainability at the front of their agenda, was important to us when deciding to partner with them.”

Sophie Chater, Sales & Marketing Executive at Totally Modular



For this project, Totally Modular selected the following waterproof wall panels: Jupiter Silver from the Classic Collection with Hydrolock for a watertight and joint free finish, finished around the edges with Satin Profiles to create a watertight seal.

Experience & expertise

When it comes to manufacturing products to achieve completely watertight low maintenance bathrooms, Multipanel is the industry expert.

With a history of innovation spanning over 135 years, Multipanel is at the forefront in manufacturing waterproof wall panels that enable housing professionals to create great looking, practical, waterproof interiors. The ease with which our products can be installed, together with negligible ongoing maintenance, make our products a clear choice in the social housing sector. Market leading.

Market leading

We produce over 8000 wall panels every week at our UK factory and have distribution centres throughout Great Britain, Northern Ireland and Europe, ensuring fast and effective production and delivery. The skill and commitment of our team have helped make us the market leader in the field of manufacturing for building interiors.

Contact us

To discuss the benefits of Multipanel or to arrange a FREE TRIAL installation visit:
multipanel.co.uk/modular-homes



Reasons to choose Multipanel...

1. Manufactured using sustainable materials
2. Rated 4.8/5 by homeowners
3. Installation support and training



Easy to keep clean



Completely Waterproof



Almost seamless joint with Hydrolock®



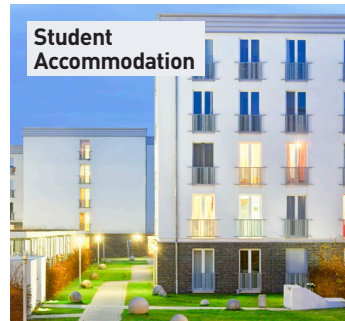
Quick & easy to install



Panels can be fitted over existing tiles



30 year warranty



Multipanel
Westfield Avenue
Edinburgh,
EH11 2QH

marketing@multipanel.co.uk
t: +44(0)131 290 2862

multipanel.co.uk

