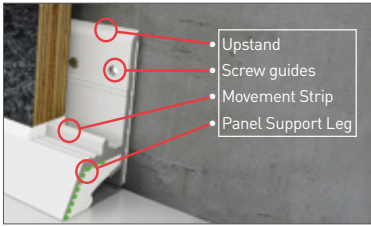


# MULTIPANEL<sup>®</sup> WALLS

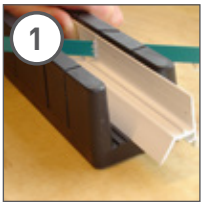
## BATH / SHOWER TRAY SEAL KIT



Firstly, ensure the plumbing is fit for purpose and the bath or shower tray is securely fixed resting steady on the floor.

### Recommended Tools

- Masonry bit & plugs for fixing to cement based wall
- 32mm x 4.8mm noncorrosive self-tap screws
- Roll of 50mm masking tape
- Tissues (*toilet roll, kitchen roll or paper towels*)
- 5mm steel drill bit
- Drill & screwdriver
- Measuring tape
- Power drill
- Utility knife
- Silicone sealant and gun
- Hacksaw
- Pencil



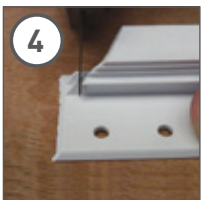
**1** Measure and cut strips to length. Mitre cut corners. Square cut ends.



**2** Remove frays left by saw with blade or file.



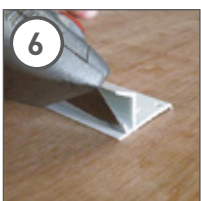
**3** Notch each mitre cut with a snips or blade as shown.



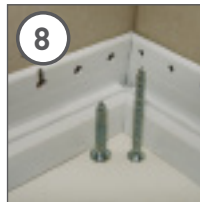
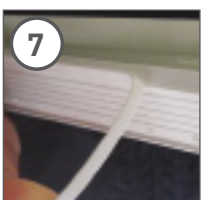
**4** Notches form a square hole through meeting strips.



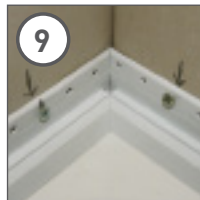
**5** Test strip in position over ledge. If required to lower the outer edge onto the ledge, score the strip as shown.



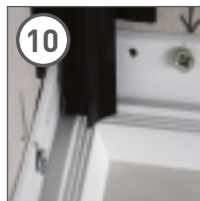
**6** Tear off the removable leg if required.



**8** Locate strips in position. Choose the most appropriate screw size and fixing location. Enlarge holes if required.



**9** Dry-fix strips.



**10** Dry fit the Type A internal corner profile. Notch flanges so trim outer face rests on strip panel support leg. Remove strips and wall trim.



**11** Wipe ledges with alcohol or methylated spirits. With pencil and small strip off-cut, lightly mark where the outer edge of each strip rests on the ledge (4 points per side).



**12** Insert first strip (middle strip if any) upside down into 2 mitre boxes (or similar support). Resting nozzle in strip, lay a 400mm line of Sealux-N inside the profile.



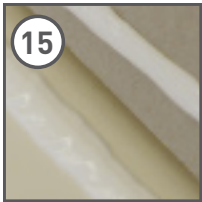
**13** Level Sealux-N across the strip with spatula. Redistribute or add as required. Repeat process in 400mm steps until complete. Ensure sealant is buttered flush with ends of strip.



**14** On the side to receive this strip, using finger under nozzle as support and fingertip against wall as guide, lay an 8mm line of Sealux-N on the ledge inside the strip outer edge pencil marks.

# MULTIPANEL<sup>®</sup>

## BATH / SHOWER TRAY SEAL KIT



Lay a 5mm line of Sealux-N roughly 15mm over ledge.



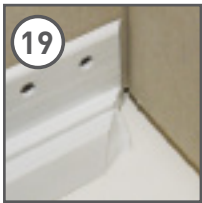
Offer the first strip over the joint fusing the Sealux-N in the strip with the Sealux-N on the ledge to form a watertight seal as you rotate the strip upstand into its final position against the wall.



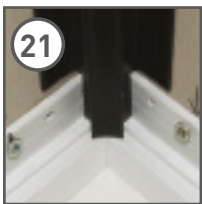
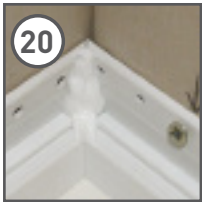
Screw this first strip to wall.



Remove surplus sealant (if any) off ledge with the square corner edge of spatula on end caps card.



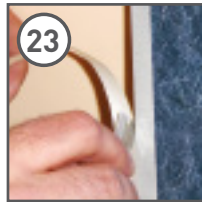
Repeat the same procedure for remaining strips. Butter Sealux-N across corner joints to ensure Sealux-N fuses across meeting strips. Apply Sealux-N into notches at corners as shown.



Screw fix Type A internal corner to the wall or end grounds.



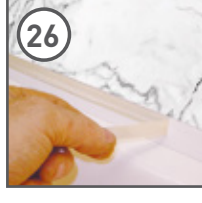
Apply masking tape over strip and along bottom face of panel but not surfaces covered by corner or edge trims.



Prior to fixing each panel, lay a line of Sealux-N in the strip channel between the upstand and panel support leg



After all panels have been fixed, apply a line of Sealux-N into the joint between the panel and strip. Ensure the Sealux-N is pressed firmly into the joint. Rub up the joint removing the surplus Sealux-N.



Remove the masking tape off the strip and panel.



After the Sealux-N has skinned (5mins) give the silicone a final light rub.

### Shower Door Profiles

If it is intended to install a shower door and the width of the shower door wall profile is known prior to installing the strip, the strip face crossing the shower door wall profile should be notched prior to strip installation. If the width of the shower door wall profile is not known prior to installing the strip, the strip should be retrospectively notched to accommodate this shower door wall profile.

Retrospectively notching the strip can be carried out with a hot sharp pointed blade. Ensure shower door wall profile is bedded in Sealux-N silicone where fixed over the wall panel.